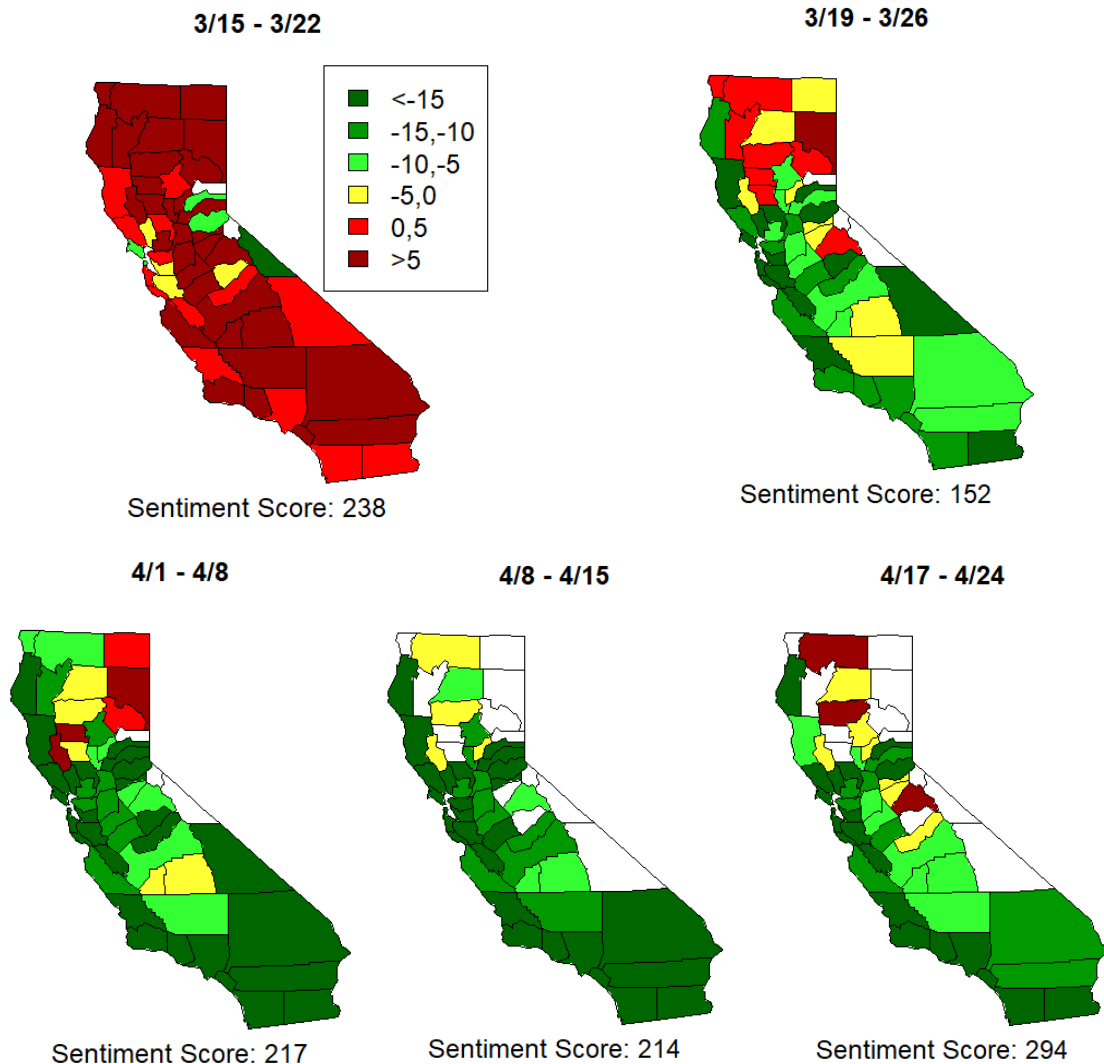


Team Covid 1919

Shirley Mach(shirleymach.12@gmail.com), Leah Skelton(leahskelton3@gmail.com), Mayra Varillas (varillas.mayra1@gmail.com), Alfonso Lua(alfonsolua36@gmail.com), and Sarah Truax(sarahtruax@gmail.com)

Given that California is top 5 with the number of coronavirus cases, we decided to focus our analysis on the mobility within California. The focus is on how grocery movement changed over time. We also decided to evaluate the new developments from the governor in order to see the effect of governmental leadership on the mobility of the counties. We chose 5 different speeches that were identified as major developments in the coronavirus efforts by California. Our question was developed to identify if there was any relationship between the sentimentality of Governor Gavin Newsom's speeches and the mobility of the counties. We believe that this analysis could be used to further our understanding on how leadership affects the movement of individuals during a crisis such as the coronavirus.

Average Change in Grocery Store Mobility in the Week After Speech



Links: [Sentiment Analysis Calculator](#), [Newsom's Transcripts](#), [Mobility Data on Google Cloud](#), [Codebook and summary of the Mobility Data](#)